

Measure Twice, Cut Once: Using the Major Outcomes Report to Unlock New Knowledge and Action

Jennifer Haight

Sara Feldman

Center for State Child Welfare Data
Chapin Hall at the University of Chicago

Agenda

- ✓ Major Outcomes Report: Overview and contents
- ✓ The benefits of using the Major Outcomes Report to fuel the process of improvement:
 - Build your working knowledge: know what's typical
 - Identify obvious opportunities for improvement
 - Access and use the resources of the Data Center to build capacity for ongoing inquiry
- ✓ Recap and next steps

The Major Outcomes Report: Overview

A report that **asks and answers** a set of mission-critical **questions** about **outcomes for children in foster care**:

- ✓ The flow of children in and out of care (admissions & exits)
- ✓ Length of Stay (Duration)
- ✓ Permanency
- ✓ Placement Stability
- ✓ Reentry

The Major Outcomes Report: Overview

A report that reflects a commitment to a set of **priority concepts** in measurement:

- ✓ State your question first
- ✓ Know the population from which you are measuring
- ✓ (Almost always) use entry cohorts to answer general questions about system characteristics or outcomes
- ✓ Stratify: identify diagnostically relevant groups
- ✓ Likelihood or probability: Using the past to predict the future

Major Outcomes Report: Contents

Preface:
Technical detail about the FCDA and organization of the workbook.

Tables: Each numbered tab answers a set of questions pertaining to the topic noted. Outcomes are provided at the state level and for the relevant administrative entities for the last five fiscal years.

Preface	Measurement notes	1. Overview	2. Moves	3. Duration	4. Permanency	5. Reunification	6. Adoption	7. Reentry
----------------	-------------------	-------------	----------	-------------	---------------	------------------	-------------	------------

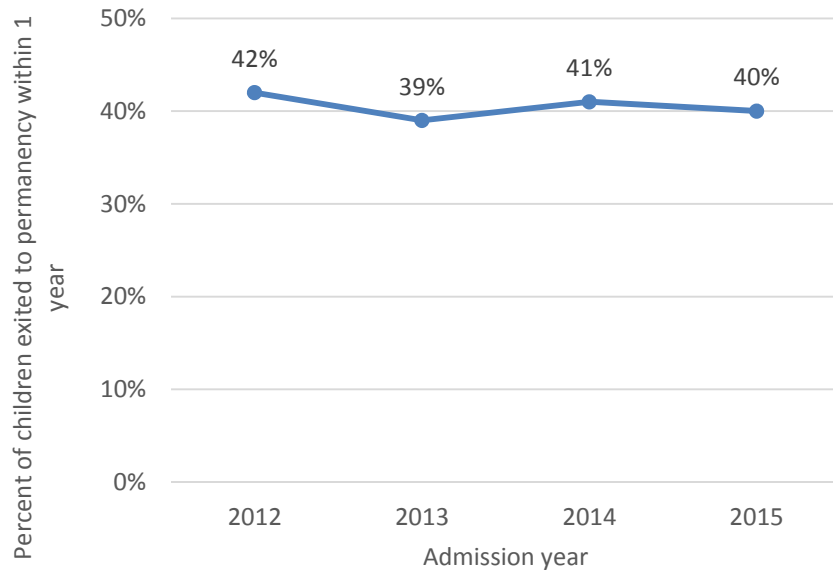
Measurement notes: Detail about the questions answered in each tab, as well as the methods for answering them.

Major Outcomes Report: Measurement Notes

	A	B	C	D	E
1	Tab	Table Title	Questions Answered	Denominator / Population	Numerator
3. Permanency		Cumulative exits to permanency (adoption, reunification, exit to relative), by child age at entry	Of all children entering foster care for the first time, what percent exited to permanency within 6 months?	First admissions to foster care during the calendar year	First admissions who exited to permanency within 6 months
10			Of all children entering foster care for the first time, what percent exited to permanency within 1 year?		First admissions who exited to permanency within 1 year
11			Of all children entering foster care for the first time, what percent exited to permanency within 2 years?		First admissions who exited to permanency within 2 years
12			Of all children entering foster care for the first time, what percent exited to permanency within 3 years?		First admissions who exited to permanency within 3 years
13			Of all children entering foster care for the first time, what percent exited to permanency within 4 years?		First admissions who exited to permanency within 4 years
14			Of all children entering foster care for the first time, what percent exited to permanency within 5 years?		First admissions who exited to permanency within 5 years
15			Does the cumulative probability of exit to permanency vary by child age at entry?	Same as above, stratified by the child's age at entry	Same as above, stratified by the child's age at entry
16	4. Moves	Conditional probability of initial move (3-month intervals), by first placement	Of all children entering foster care for the first time, what percent experienced an initial placement move in the first three placements of care?	First admissions to foster care who were in care at the start of the interval and had experienced	First admissions who experienced an initial placement move during the interval

Benefit #1: Knowing what's typical over time

Likelihood of exiting to permanency within 1 year (all ages)

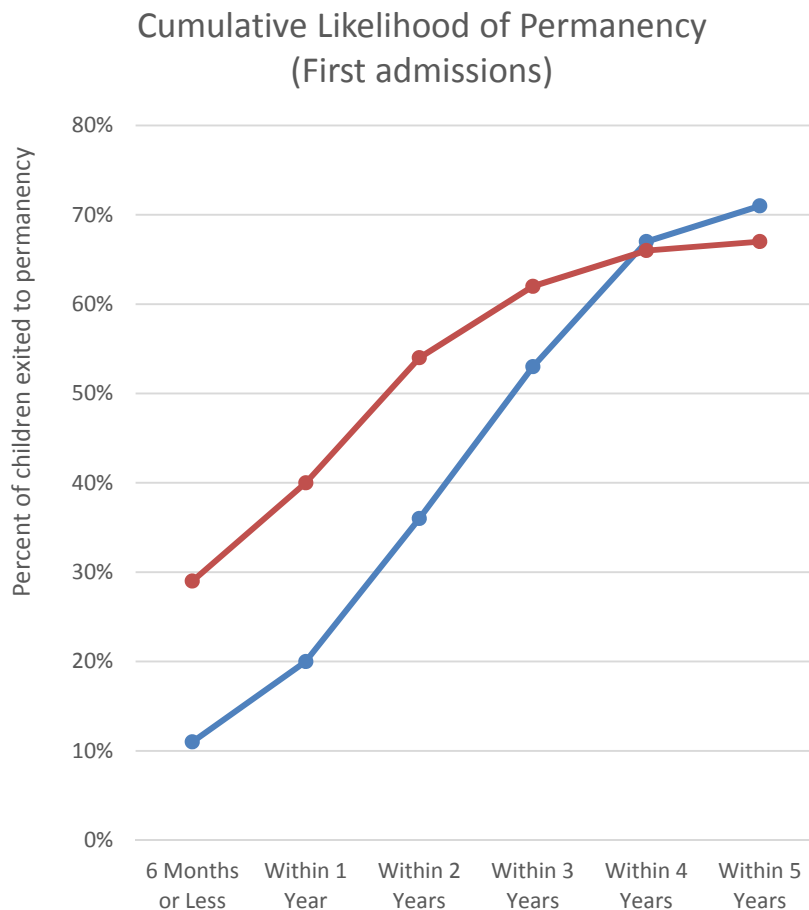


In this system, about 40 percent of children exit to permanency within one year of entry.

- The Major Outcomes Report graph depicts a relatively flat line; this seems typical.
- Note the table: we don't have all of the information for 2016, but given the past, what seems likely? What could you reasonably *predict* for 2016? For 2017?
- How might this help you structure an improvement goal?

	6 Months or Less	All Ages				
		Within 1 Year	Within 2 Years	Within 3 Years	Within 4 Years	Within 5 Years
2012	30%	42%	57%	63%	66%	67%
2013	28%	39%	53%	64%	67%	--
2014	29%	41%	51%	59%	--	--
2015	28%	40%	46%	--	--	--
2016	26%	28%	--	--	--	--

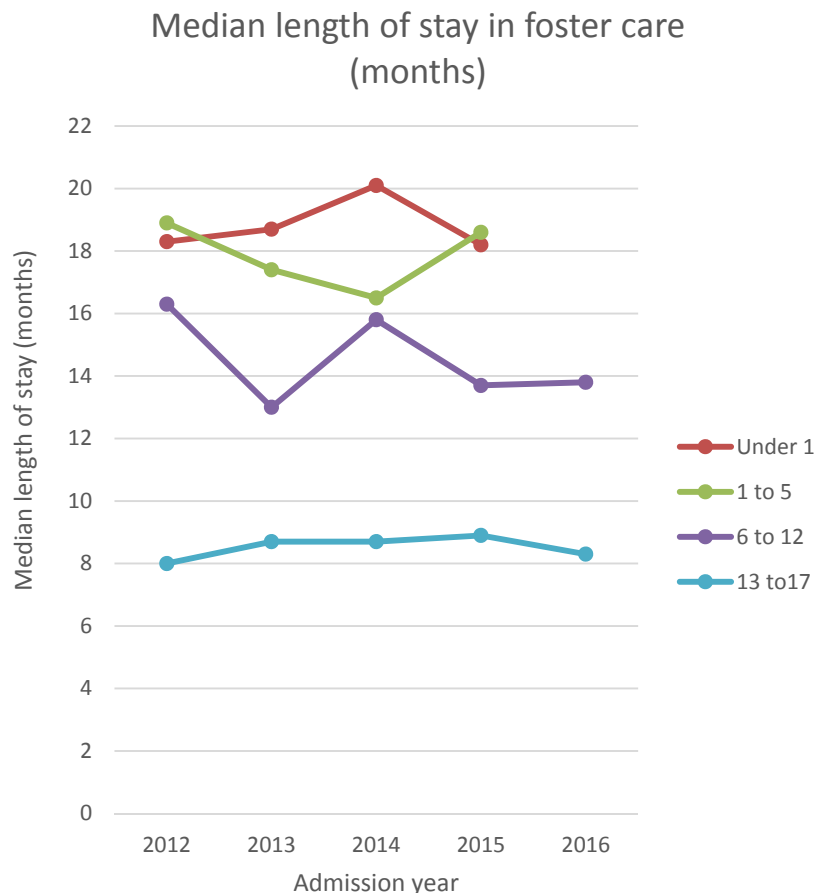
Benefit #1: Knowing what's typical about variation across administrative entities



Path to permanency (first admissions) for two different regions within the same system:

- In the red region, over 25 percent of children exit to permanency within six months of entry – and that path reaches 60 percent within three years, and then flattens.
- In the blue region a much smaller proportion of the cohort exits quickly. We see the same steady increase, albeit at a slower pace. Ultimately, a greater proportion of children from the blue region achieve permanency: over 70 percent within 5 years.
- What kinds of questions could this raise?

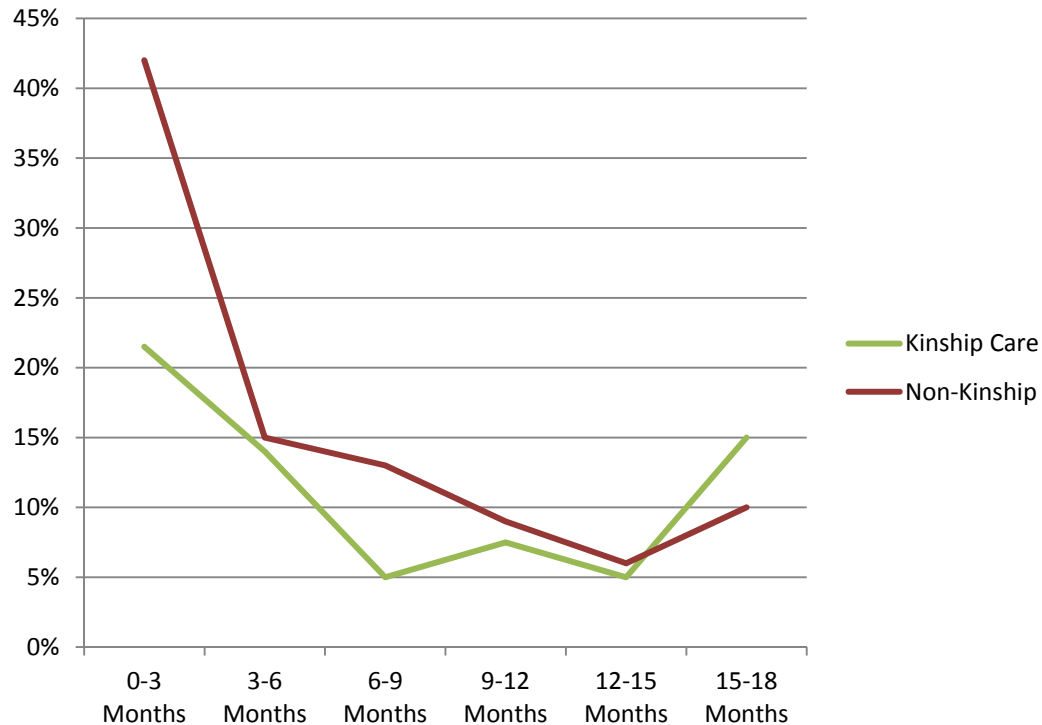
Benefit #1: Knowing what's typical within diagnostically relevant groups



- Younger children, especially infants, typically have longer durations in care.
 - In fact, enough time has not elapsed for us to observe the median duration of the younger children who were admitted to foster care in 2016.
- Teenagers generally have the shortest duration in care.
- In this system, most children under 13 years of age at entry will remain in foster care for 12 months or more.

Benefit #2: Identify the obvious **targets for improvement**

Conditional Probability of an Initial Move
by First Placement Type



- Across both initial placement types, the probability of a child experiencing their initial move is highest in the first 3 months of placement
- It is almost twice as high, though, for children initially placed in non-kinship homes
- We also see an interesting flip in the 15-18 month interval, with otherwise stable kinship placements starting to erode.
- What are the practical implications of this evidence? What might change in the system in response?

Benefit #3: Access and use the resources of the Data Center to **continue to fuel the improvement process**

Anticipating the inevitable: the Major Outcomes Report answers fundamental questions about major outcomes. This will inevitably lead you to ask more questions.

- ✓ *The data file that produced the MOR is available for additional queries*

Capacity building: education/training arm of the Data Center can meet you where you're at:

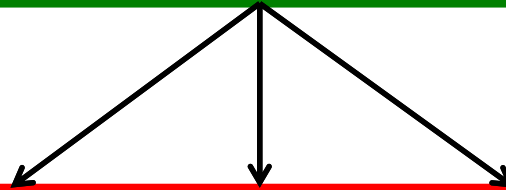
- ✓ *Work with your staff to build internal capacity to craft and answer the next set of questions you have*
- ✓ *Provide ongoing technical assistance and consulting*

Asking and answering questions is essential to the process of improvement

Recap: The Major Outcomes Report

What it is, what it isn't

- ✓ **Outcomes for children and families**
 - *Admissions, exits, duration, placement stability, permanency, reentry*



- ✓ **The process of care**
 - *What percent of children entering foster care receive a family team meeting in the first two weeks of care?*
- ✓ **The quality of care**
 - *Are social workers using best practices to foster the parent/child relationship during visits?*
- ✓ **The capacity to deliver care**
 - *Do we have a sufficient number of workers to manage the foster care caseload?*

Recap: Benefits of the Major Outcomes Report

Internalize working knowledge of system dynamics.

Lean on your knowledge of typical patterns in order to be proactive and strategic as circumstances arise.

Knowledge of what's typical enables you recognize something that's atypical.

Knowledge of what's typical enables you to predict future performance

Clearly see opportunities for targeted improvement efforts.

Use the Major Outcomes Report as an entryway to a more nuanced set of performance questions. The resources of the Data Center can help: to leverage existing capacity, build new capacity, or serve as external capacity.

A sneak peek...

Example: Reentry rates

Administrative Entities	All Exits					
	FY12	FY13	FY14	FY15	FY16	FY17
Statewide	10%	10%	9%	10%	9%	2%
District 1	13%	15%	14%	16%	17%	1%
District 2	13%	12%	12%	15%	10%	2%
District 3	11%	7%	7%	7%	3%	0%
District 4	7%	6%	9%	10%	8%	2%
District 5	8%	10%	7%	10%	7%	3%
District 6	9%	15%	5%	8%	8%	1%
District 7	11%	10%	5%	8%	8%	4%
District 8	4%	6%	8%	6%	7%	2%
District 9	16%	11%	15%	11%	11%	3%
District 10	12%	13%	2%	4%	8%	1%

The full version of the Major Outcomes Report provides information across time, across administrative entities and – not shown here – across age groups for all of the core outcomes discussed today.

How do I get my hands on the Major Outcomes Report?!

- ✓ Member states recently received a sample Major Outcomes Report.

If you're a member and you'd like to see more, reach out!

- ✓ Not a member and want in?

Contact us after the webinar to talk about joining the Data Center.

Email Lily Alpert at lalpert@chapinhall.org